



COMPASS

Queens Luxury Report

Dec 08 - 14, 2025, Residential Contracts \$1.25M+

Photo: [1463 Burton Street](#)

The Queens luxury real estate market, defined as all properties priced \$1.25M and above, saw 17 contracts signed this week, made up of 4 condos, and 13 houses. The previous week saw 12 deals. For more information or data, please reach out to a Compass agent.

\$1,551,987

Average Asking Price

\$1,490,000

Median Asking Price

\$939

Average PPSF

1%

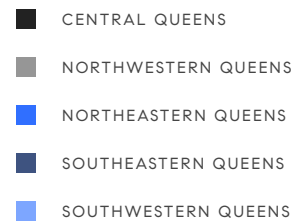
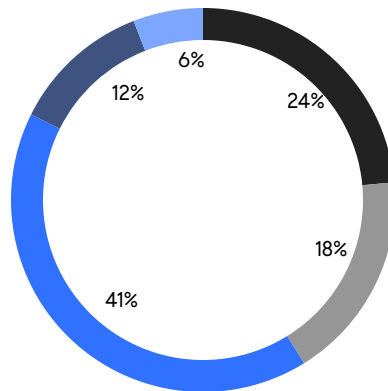
Average Discount

\$26,383,776

Total Volume

100

Average Days On Market



4

Condo Deal(s)

0

Co-op Deal(s)

13

Single-Family Deal(s)

\$1,593,500

Average Asking Price

\$0

Average Asking Price

\$1,539,214

Average Asking Price

\$1,532,500

Median Asking Price

\$0

Median Asking Price

\$1,398,000

Median Asking Price

\$1,524

Average PPSF

\$726

Average PPSF

1,062

Average SqFt

2,104

Average SqFt



74 Puritan Avenue

Forest Hills

Contract Signed

Type	House	Price	\$2,788,000	Sq. Ft.	-	Beds	6
DOM	2	Initial	\$2,788,000	PPSF	-	Baths	6

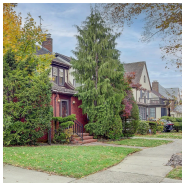


11-36 45th Road, Unit 505A

Long Island City

Contract Signed

Type	Condo	Price	\$2,010,000	Sq. Ft.	1,135	Beds	3
DOM	19	Initial	\$2,010,000	PPSF	\$1,771	Baths	2



70-50 Ingram Street

Forest Hills

Contract Signed

Type	House	Price	\$1,699,000	Sq. Ft.	1,952	Beds	3
DOM	26	Initial	\$1,699,000	PPSF	\$871	Baths	1



208-15 38th Avenue

Bayside

Contract Signed

Type	House	Price	\$1,598,000	Sq. Ft.	2,248	Beds	4
DOM	205	Initial	\$1,598,000	PPSF	\$711	Baths	2

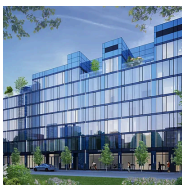


36-11 221st Street

Bayside

Contract Signed

Type	House	Price	\$1,590,888	Sq. Ft.	2,315	Beds	4
DOM	32	Initial	\$1,590,888	PPSF	\$688	Baths	4.5



11-36 45th Road, Unit 502A

Long Island City

Contract Signed

Type	Condo	Price	\$1,575,000	Sq. Ft.	875	Beds	2
DOM	232	Initial	\$1,575,000	PPSF	\$1,800	Baths	2

Compass is a licensed real estate broker and abides by Equal Housing Opportunity laws. All material presented herein is intended for informational purposes only. Information is compiled from sources deemed reliable but is subject to errors, omissions, changes in price, condition, sale, or withdrawal without notice. No statement is made as to the accuracy of any description. All measurements and square footages are approximate. This is not intended to solicit property already listed. Nothing herein shall be construed as legal, accounting or other professional advice outside the realm of real estate brokerage.



4734 Glenwood Street

Little Neck

Contract Signed

Type	House	Price	\$1,538,000	Sq. Ft.	3,350	Beds	7
DOM	242	Initial	\$1,538,000	PPSF	\$460	Baths	4



8012 188th Street

Jamaica Estates

Contract Signed

Type	House	Price	\$1,498,000	Sq. Ft.	2,250	Beds	5
DOM	34	Initial	\$1,498,000	PPSF	\$666	Baths	3



38-08 Union Street, Unit 8G

Flushing

Contract Signed

Type	Condo	Price	\$1,490,000	Sq. Ft.	1,283	Beds	3
DOM	399	Initial	\$1,650,000	PPSF	\$1,162	Baths	2

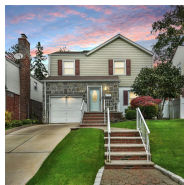


53-35 192nd Street

Auburndale

Contract Signed

Type	House	Price	\$1,398,000	Sq. Ft.	1,793	Beds	4
DOM	38	Initial	\$1,398,000	PPSF	\$780	Baths	3

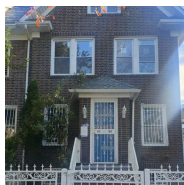


79-27 212th Street

Oakland Gardens

Contract Signed

Type	House	Price	\$1,398,000	Sq. Ft.	1,608	Beds	3
DOM	35	Initial	\$1,398,000	PPSF	\$870	Baths	2



33-33 88th Street

Jackson Heights

Contract Signed

Type	House	Price	\$1,359,000	Sq. Ft.	1,662	Beds	4
DOM	36	Initial	\$1,359,000	PPSF	\$818	Baths	3

Compass is a licensed real estate broker and abides by Equal Housing Opportunity laws. All material presented herein is intended for informational purposes only. Information is compiled from sources deemed reliable but is subject to errors, omissions, changes in price, condition, sale, or withdrawal without notice. No statement is made as to the accuracy of any description. All measurements and square footages are approximate. This is not intended to solicit property already listed. Nothing herein shall be construed as legal, accounting or other professional advice outside the realm of real estate brokerage.



86-09 104th Street

Richmond Hill

Contract Signed

Type	House	Price	\$1,308,000	Sq. Ft.	-	Beds	7
DOM	43	Initial	\$1,308,000	PPSF	-	Baths	2.5



2-26 50th Avenue, Unit 11B

Long Island City

Contract Signed

Type	Condo	Price	\$1,299,000	Sq. Ft.	954	Beds	2
DOM	141	Initial	\$1,335,000	PPSF	\$1,362	Baths	2



16419 32nd Avenue

Flushing

Contract Signed

Type	House	Price	\$1,288,888	Sq. Ft.	2,880	Beds	3
DOM	14	Initial	\$1,248,000	PPSF	\$448	Baths	3



86-79 Pinto Street

Holliswood

Contract Signed

Type	House	Price	\$1,288,000	Sq. Ft.	1,677	Beds	3
DOM	26	Initial	\$1,288,000	PPSF	\$769	Baths	2.5



34-42 88th Street

Jackson Heights

Contract Signed

Type	House	Price	\$1,258,000	Sq. Ft.	1,400	Beds	3
DOM	167	Initial	\$1,450,000	PPSF	\$899	Baths	2

Compass is a licensed real estate broker and abides by Equal Housing Opportunity laws. All material presented herein is intended for informational purposes only. Information is compiled from sources deemed reliable but is subject to errors, omissions, changes in price, condition, sale, or withdrawal without notice. No statement is made as to the accuracy of any description. All measurements and square footages are approximate. This is not intended to solicit property already listed. Nothing herein shall be construed as legal, accounting or other professional advice outside the realm of real estate brokerage.